

BRIDGE EXPANSION JOINT RANGE

NEW

SENTINELTM

To complement the world leading ELIMINATOR[®] Bridge Deck Waterproofing System, Stirling Lloyd introduce SENTINEL[™], a complete range of Bridge Expansion Joints.

- ALL MOVEMENT RANGES UP TO 330mm
- HIGHWAYS AGENCY BD33/94 REGISTERED SYSTEMS



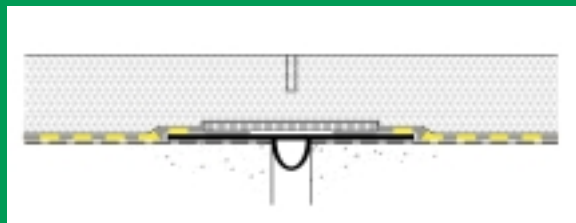
stirling lloyd

THE TECHNOLOGY OF PROTECTION

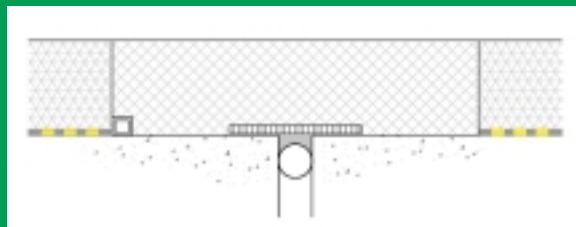
www.stirlinglloyd.com

Combined Waterproofing and Expansion Joint Systems

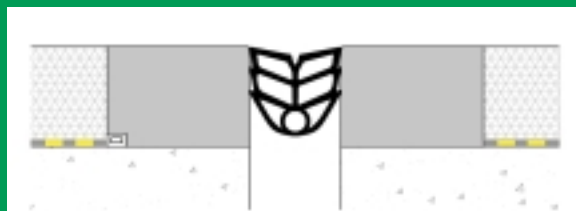
1 Point Accountability with proven 100% effective waterproofing



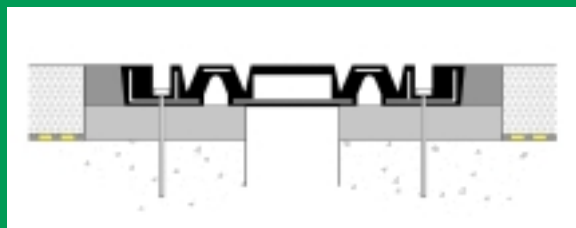
Type 1 Sentinel B1 to B4



Type 2 Sentinel RAB

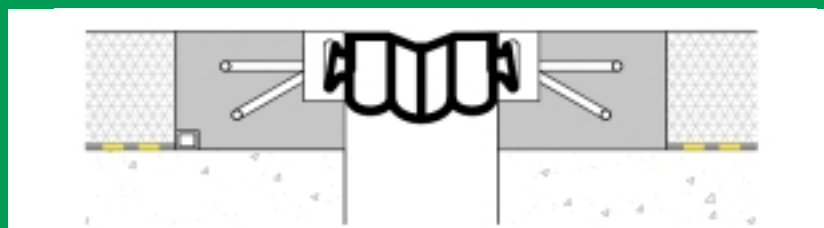


Type 4 Sentinel NJ



Type 5 Sentinel Algaflex T

JOINT TYPE from BD 33/94	TOTAL ACCEPTABLE MOVEMENT	
	MINIMUM (mm)	MAXIMUM (mm)
Type 1 Buried joint under continuous surfacing	5	20
Type 2 Asphaltic Plug Joint	5	40
Type 4 Nosing with preformed compression seal	5	40
Type 5 Reinforced Elastomeric	5	330
Type 6 Elastomeric in metal runners	5	150



Type 6 Sentinel EMR



ARE BRIDGE EXPANSION JOINTS YOUR CONCERN?

If you would like further information on Sentinel™ Expansion Joints, simply fill in the fax back request form below.

Fax back to Stirling Lloyd on: 01565 633555

Name:

Position:

Company Name:

Address:

Tel: Fax:

Email:

Please send me further information on:

Sentinel Bridge Expansion Joints

and/or other Stirling Lloyd products:

Eliminator Bridge Deck Waterproofing

Structural Expansion Joints/Waterproofing

Car Park Expansion Joints/Waterproofing

Combined Waterproofing & Wearing Courses

Skid Resistant Surfacing

Alternatively, you can request further information by emailing Stirling Lloyd on:

marketing@stirlinglloyd.com

or telephoning us on:

01565 633111

stirling lloyd

THE TECHNOLOGY OF PROTECTION

Stirling Lloyd Polychem Ltd, Union Bank, King Street, Knutsford, Cheshire, WA16 6EF, UK.
Tel: +44 (0) 1565 633111 Fax: +44 (0) 1565 633555 E-mail: marketing@stirlinglloyd.com

www.stirlinglloyd.com